

Company Profile
PT AWINA RIKUDENKO SOLAR ENGINEERING INDONESIA

ARISE



PT AWINA RIKUDENKO SOLAR ENGINEERING INDONESIA

ARISE

TABLE OF CONTENTS

Table of Contents	2
Introduction of ARISE's Solar Power Plant	3
ARISE Company Summary	4
About the Company	5
ARISE History	6
ARISE Board Members	7
Board Members Work Record	8
Company Organization Chart	9
Certificate and Licenses	10
ARISE Business Lines	11
ARISE Projects	13
Reference I: Joint Research Cooperation Supported by ARISE	15
Reference II: ARISE Gallery	19
Reference III: ARISE Office Space	21
Reference IV: Shareholders - About HOKURIKU DENKO	22
Reference V: Shareholders - About AWINA	24
Reference V: Shareholders - About AAI	24

Segara Village Hotel, Sanur, Bali, Indonesia (25.3 kWp)





ARISE'S SOLAR POWER PLANT

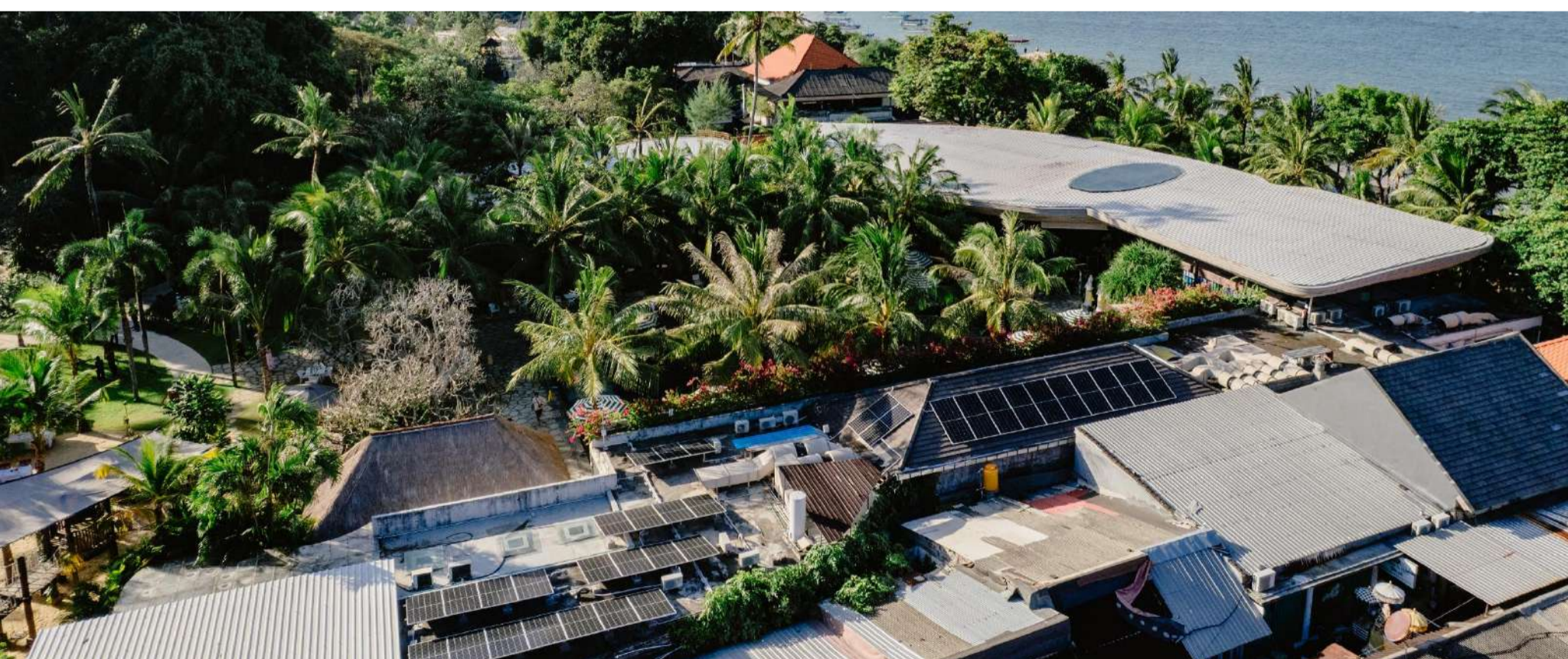
Segara Village Hotel, Sanur, Bali, Indonesia (25.3 kWp)



ARISE

COMPANY SUMMARY

Company Name	PT AWINA RIKUDENKO SOLAR ENGINEERING INDONESIA (ARISE)
Date of Establishment	April 7, 2023
Address	SME Tower 16F, Jl. Jenderal Gatot Subroto Kav. 94, Pancoran, South Jakarta, Indonesia 12780
Capital Stock	IDR 30 Billion
Board of Directors	Shibahara Takashi – President Director Kita Katsuhiko – Director Ananda Setiyo Ivannanto - Director
Board of Commissioners	Yamazaki Isashi – President Commissioner Ono Takahito – Commissioner
Shareholders	HOKURIKU ELECTRICAL CONSTRUCTION CO., LTD. (HOKURIKU DENKO) AAI CO., LTD. (AAI) PT AWINA SINERGI INTERNATIONAL (AWINA)
Business Lines	<p>KBLI 35121 Operation and Maintenance of Renewable Energy Power Plants</p> <p>KBLI 43211 Electrical Installation Services</p> <p>KBLI 70209 Management and Operating Consulting</p> <p>KBLI 71102 Electrical and Technical Consulting Service</p> <p>KBLI 77395 Leasing of Solar Power Plant Equipment</p>



ABOUT THE COMPANY

PT AWINA RIKUDENKO SOLAR ENGINEERING INDONESIA (ARISE) is a joint venture company between one Indonesian company and two Japanese companies, officially established on April 7, 2023.

We are committed to delivering solar energy solutions through **our solar energy leasing services**, as well as high-quality **EPC (Engineering, Procurement, and Construction)** and **O&M (Operations and Maintenance) operations**. Our core principles include building trust with the highest standards of integrity, ensuring safety and security, and applying advanced technical expertise and capabilities.

ARISE AIM

Take part in Indonesia's energy transition by driving the rapid adoption of renewable energy and optimizing resource utilization to achieve a carbon-neutral future.

WHY ARISE?

Japanese Construction Quality



The technical team assigned from our parent company are qualified with Japanese Professional Engineering Qualification.



Use of Top Brand Products



We use the latest and advanced technologies in our solar PV system.



Feasibility Study Proposal



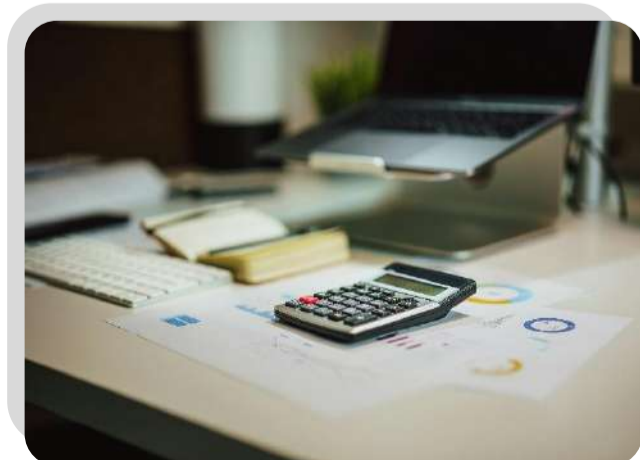
We will conduct a site survey and propose a feasibility study report in advance.



Fixed Monthly Rate



For leasing business, we offer a fixed monthly rate that includes the cost of the solar PV system, EPC, and O&M.



ARISE HISTORY

1944 – 2010

With an experience of over than 60 years in the electrical construction field, our parent company, HOKURIKU DENKO, decided to develop IPP and solar energy business.



2012 – 2022

HOKURIKU DENKO constructed 567 Solar Power Plants in Japan, installed many major electrical components for Biomass and Wind Power Plant (excluding generators).



2019 - 2022

HOKURIKU DENKO began its overseas business study and research mainly in Indonesia.



2023

Our first overseas subsidiary company: **ARISE INDONESIA** was established on April 7, 2023 based in South Jakarta, Indonesia.



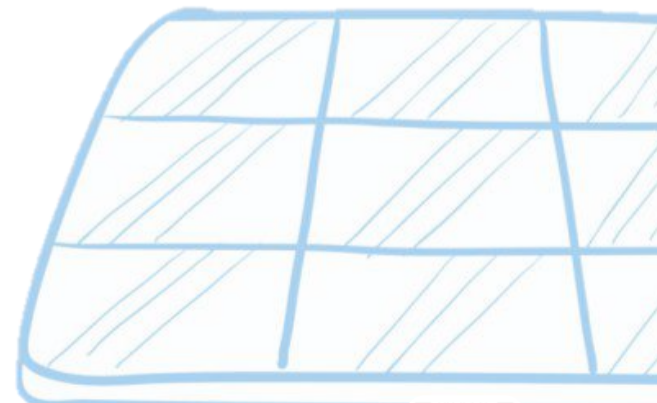
2023 – 2024

ARISE gained licenses for operating business in Indonesia (SBU, IUJPTL, ISO)



2025

ARISE debut for Solar Power Plant Showcase Project: Segara Village Hotel, Bali, Indonesia



ARISE

BOARD MEMBERS

Board of Directors



Shibahara Takashi

President Director of ARISE

*General Manager of Planning Department,
Overseas Business Section
Hokuriku Electrical Construction Co., Ltd.*



Kita Katsuhiko

Director of ARISE - Technical

*Senior Managing Director
Hokuriku Electrical Construction Co., Ltd.*



Ananda Setiyo Ivannanto

Director of ARISE – Sales & Planning

*President Director
PT Awina Sinergi International*

Board of Commissioners



Yamazaki Isashi

President Commissioner of ARISE

*President and Representative Director
Hokuriku Electrical Construction Co., Ltd.*



Ono Takahito

Commissioner of ARISE

*President Director
AAI Co., Ltd.*



BOARD MEMBERS

WORK RECORD



Shibahara Takashi

1990	Hokuriku Electric Power Co., Ltd.	
2022	Hokuriku Electrical Construction Co., Ltd.	
	[Head Quarter]	General Manager of Business Development Department
2024	[Head Quarter]	General Manager of Planning Department (Overseas Business Section)



Kita Katsuhiko

1984	Hokuriku Electrical Construction Co., Ltd.	
2015	[Tokyo Branch]	Executive Vice Branch Manager
2018	[Head Quarter]	Director Manager of Indoor Wiring Department
2020	[Head Quarter]	Senior Executive Manager of Indoor Wiring Department
2021	[Head Quarter]	Managing Director
2023	[Head Quarter]	Senior Managing Director



Ananda Setiyo Ivannanto

2010	A-WING International Co., Ltd.	
	[Representative Office - Logistics Japan]	
2013	PT AWINA SINERGI INDONESIA	President and Representative Director
2018	PT AWINA SINERGI INTERNATIONAL	President and Representative Director
2018	AAI Co., Ltd.	Director



Yamazaki Isashi

1985	Hokuriku Electrical Construction Co., Ltd.	
2018	[Takaoka Branch]	Executive Vice Branch Manager
2019	[Head Quarter]	Director of Management Department
2020	[Head Quarter]	Senior Executive Manager of Planning Department
2021	[Head Quarter]	Managing Director
2023	[Head Quarter]	President and Representative Director

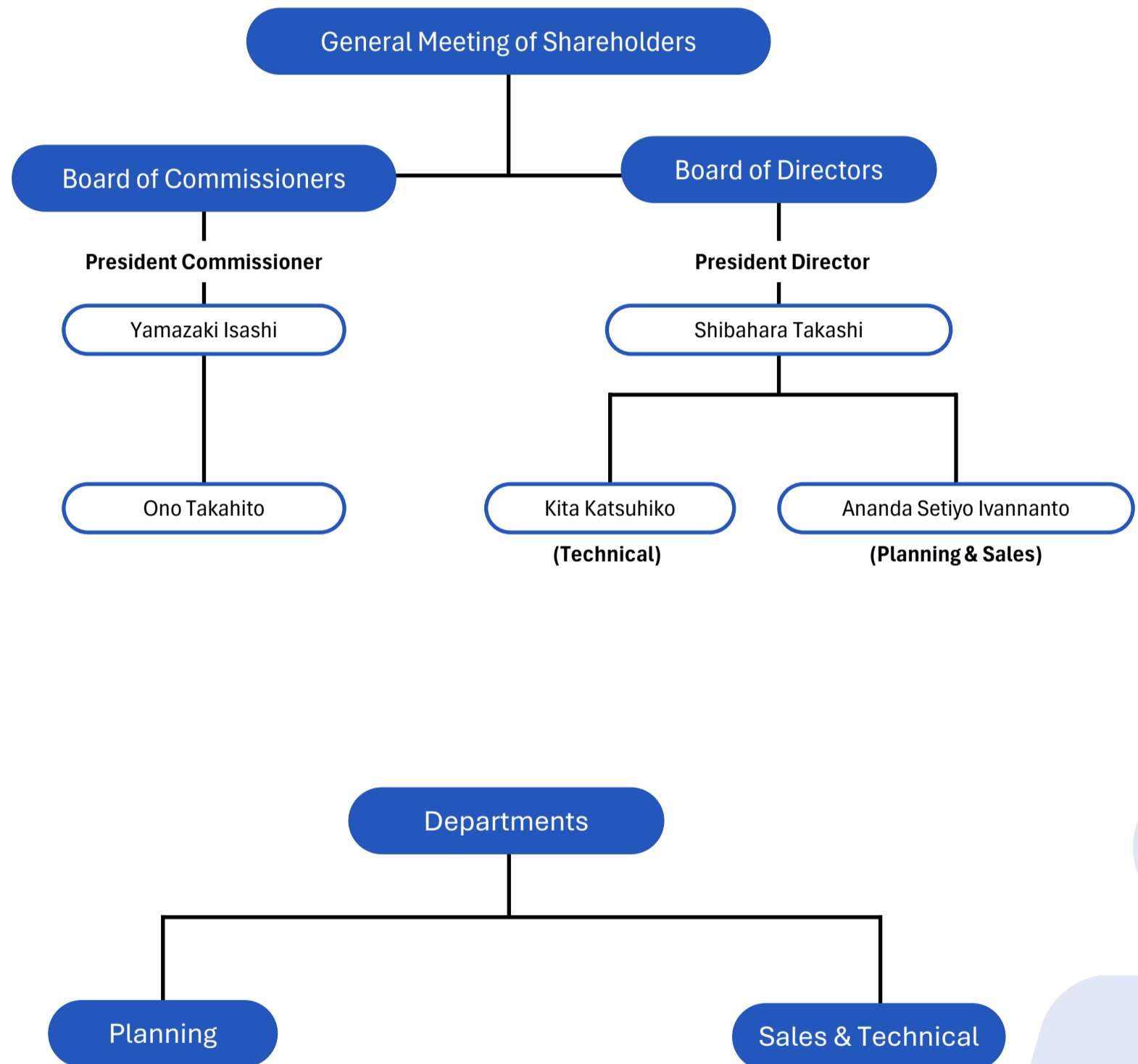


Ono Takahito

2012	A-WING Co., Ltd. [Establishment]	Director
2014	A-WING Co., Ltd.	President and Representative Director
2018	A-WING International Co., Ltd.	President and Representative Director
2019	AAI Co., Ltd.	Director
2021	AAI Co., Ltd.	President and Representative Director



COMPANY ORGANIZATION CHART



CERTIFICATE AND LICENCES



ISO 9001:2015 Certified — Commitment to Quality Excellence

Registration Date: November 15, 2024

Expiry Date: November 14, 2027

We have achieved ISO 9001:2015 certification, affirming our dedication to international standards in quality management. This certification reflects our ongoing efforts to enhance service quality, meet customer expectations, and ensure compliance with all relevant regulations.

By adopting ISO 9001:2015 practices, we prioritize operational efficiency, proactive risk management, and customer satisfaction — all of which drive our sustainable growth and strengthen our position in the global market.

Certified and Licensed for Electrical Construction

We hold all necessary certificates and licenses to operate in the field of electrical construction. These credentials reflect our full compliance with the safety and quality standards set by Indonesia's Ministry of Energy and Mineral Resources (ESDM), reinforcing our commitment to delivering reliable and responsible infrastructure solutions.

<p>Construction and Installation of Electrical Installations</p>	<p>Operation of Electrical Installations</p>	<p>Maintenance of Electrical Installations</p>	<p>Consultant Supervision in the Field of Electrical Installations</p>

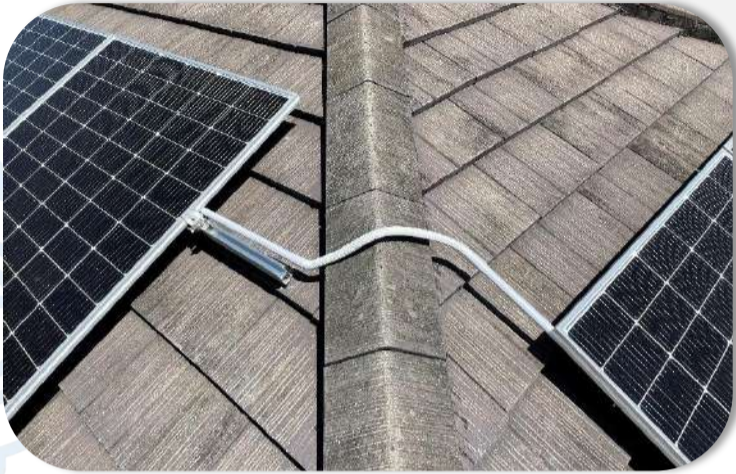
<p>Licenses for Electricity Support Services</p>		



ARISE

BUSINESS LINES

KBLI 77395 SOLAR ENERGY LEASING



Solar Equipment Lease

- ✔ Zero investment
- ✔ Fixed monthly payment plan
- ✔ Inclusive operation and maintenance
- ✔ Smart energy monitoring through app
- ✔ Electricity bill reduction
- ✔ Comprehensive liability insurance coverage
- ✔ CO₂ emissions reduction

KBLI 71102 · KBLI 43211 ENGINEERING, PROCUREMENT, CONSTRUCTION (EPC)

From Concept to Commissioning – We've Got You Covered

We will manage every stage of your project, from initial design to final commissioning, ensuring on-time delivery and peak performance. Our commitment is to deliver quality that meets the highest standards, as reliable and refined as Japanese quality.



KBLI 35121 OPERATION AND MAINTENANCE



Expert O&M Services for Long-Term Solar Performance

Our experienced team delivers customized Operation & Maintenance (O&M) solutions to maximize the efficiency and lifespan of your solar assets. We provide routine inspections, preventive maintenance, and timely repairs to ensure your system operates at peak performance — every day.

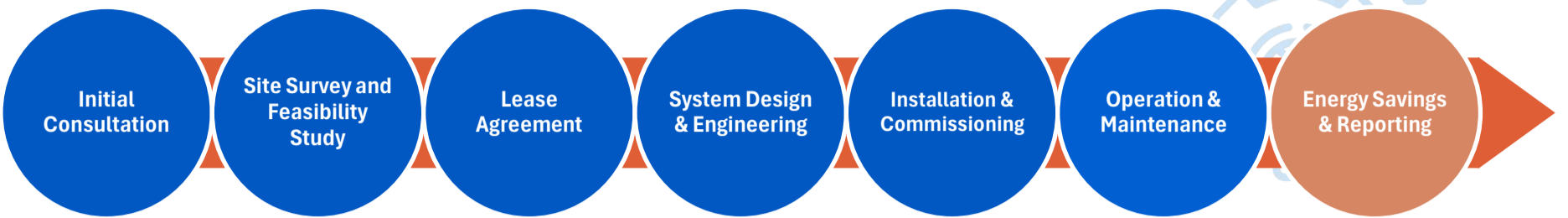
KBLI 70209 CONSULTING

Strategic Solar Consulting You Can Trust

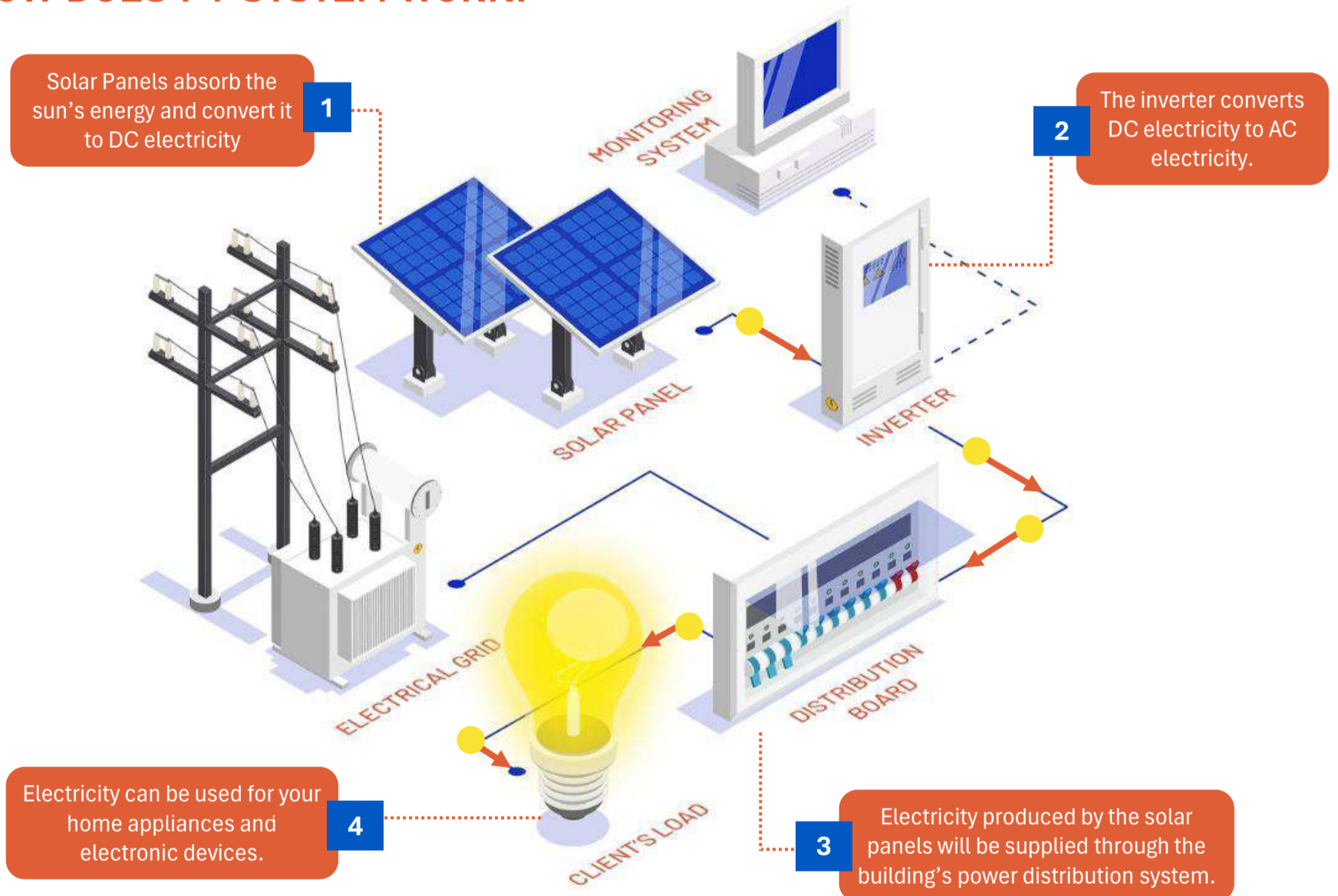
We offer end-to-end consulting services to guide you through the complexities of solar energy projects. From feasibility studies and site assessments to financial modeling and strategic planning.



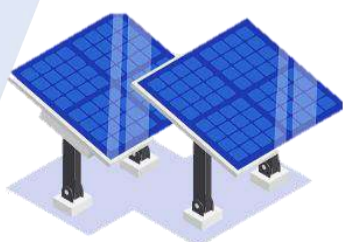
HOW IS THE SOLAR PV LEASING FLOW?



HOW DOES PV SYSTEM WORK?

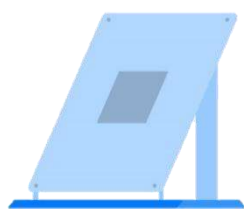


WHAT ARE THE SOLAR PV SYSTEM COMPARTMENTS?



SOLAR PANELS

Solar Panels absorb sunlight and generate electricity.



MOUNTING

Mountings are used to fix solar panels on surfaces like roofs or ground.



INVERTER

Inverter alters the direct current (DC) to alternating current (AC) electricity.



MONITORING SYSTEM

Monitoring system records the hourly generated energy and notifies if there are any system failures.



ARISE PROJECTS

Project Name: Segara Village Hotel Solar Power Plant Showcase



Project Details

Location	Segara Village Hotel Rooftop, Sanur, Bali, Indonesia
Construction Type	Installation of Solar Panel on Existing Building (On-grid)
Year of Construction	2025
Power Generation Capacity	25.3 kWp
Annual Power Generation	38.114 kWh

This showcase is a rooftop solar power generation system installed on one of the existing buildings at Segara Village Hotel. With a capacity of 25.3 kWp, this system is able to produce around 38.114 kWh of electricity per year.

This showcase reflects ARISE's commitment to providing sustainable solar energy solutions and supporting the achievement of renewable energy targets and Indonesia's efforts towards carbon neutrality.



ARISE PROJECTS

Project Name: Rooftop Solar Power Plant at Wisma Bank Indonesia Makassar



Project Details

Location	Wisma Bank Indonesia, Makassar, Indonesia
Construction Type	Installation of Solar Panel on Existing Building (On-grid)
Year of Construction	2025
Power Generation Capacity	9.9 kWp
Annual Power Generation	15,424 kWh

This showcase is a rooftop solar power generation system installed on one of the existing buildings at Wisma Karyawan Bank Indonesia Makassar. This project marks ARISE's first EPC project and demonstrates our capability to deliver integrated Engineering, Procurement, and Construction services.



JOINT RESEARCH COOPERATION SUPPORTED BY ARISE

HOKURIKU DENKO and AWINA are currently conducting a joint research project with Udayana University, a national university in Indonesia. ARISE, representing both HOKURIKU DENKO and AWINA, is supporting the project through on-site inspections and supervision.



Theme of the Joint Research Cooperation



Joint Research MoA Signing Ceremony on February 23rd, 2023





Discussion on the Implementation of the Joint Research at Udayana University



On Field Inspection at Udayana University with the Joint Research Team





Opening Ceremony of the Joint Research Cooperation at Udayana University, Bali



Presentation of the Joint Research Concept and Battery Swap Station Demonstration



(L-R) Former President Director of ARISE - SASAKI Akito; Former Deputy Consul General of Japan – ADACHI Mayuko; President Director of HOKURIKU DENKO – YAMAZAKI Isashi; Faculty Engineering of Udayana University – I Nyoman S. Winaya, Linawati, I Gusti Ketut Sukadana; AWINA- Siti Badriyah; Director of PT. Wiksa Daya Pratama – Agus Mukhlisin





Flexible Solar Panel Installation at the Canteen of Engineering Faculty of Udayana University



The Booth of Kizuna Project: Off-grid Battery Swap Station with Flexible Solar Panel



ARISE GALLERY



December 7th, 2022

Joint Venture Agreement Signing Ceremony



April 3rd, 2023

ARISE Deed of Establishment Signing Ceremony



December 15th, 2023

ARISE Office Opening Ceremony



December 15th, 2023

ARISE Office Opening Ceremony Dinner



ARISE GALLERY



May 13th, 2024

Visitation to Consulate General of Japan, Denpasar



June 3rd, 2025

Ribbon Cut ARISE Showcase Completion Ceremony



June 3rd, 2025

Participants of ARISE Solar Power Plant Showcase
Completion Ceremony at Segara Village Hotel



September 22nd, 2025

ISO 9001 Audit Surveillance



ARISE OFFICE SPACE

SME Tower, 16th Floor
Jl. Jend. Gatot Subroto Kav. 94, Pancoran,
South Jakarta 12780



Reception & Waiting Room



Staff Room



Meeting Room



ABOUT HOKURIKU DENKO



 北陸電気工事株式会社

Company Name	Hokuriku Electrical Construction Co., Ltd. (HOKURIKU DENKO)
Date of Establishment	October 1, 1944
Address	Konaka 269, Toyama City, Toyama Prefecture
Capital Stock	3.3 Billion Yen (IDR 377 Billion)
Net Sales (FY 2024)	55.6 Billion Yen (consolidated) (IDR 6.3T)
Number of Employees	1308 person (2025/04/01)
Number of Qualifications	4279 qualifications(2025/06/01)
Qualifications per Person	3.2 qualifications/employee
Public Market	Prime Market (Securities Code: 1930)

BRANCH OFFICE

TOYAMA

- Head Office
- Toyama Branch Office
- Takaoka Branch Office
- Niikawa Branch Office

ISHIKAWA

- Kanazawa Branch Office
- Nanao Branch Office
- Komatsu Branch Office

FUKUI

- Fukui Branch Office
- Tsuruga Branch Office

OSAKA

- Osaka Branch Office

AICHI

- Nagoya Branch Office

TOKYO

- Tokyo Branch Office



FIRST OVERSEAS BUSINESS IN INDONESIA

Established on April 2023



HOKURIKU DENKO'S RENEWABLE ENERGY PROJECTS

Rooftop Solar Power Plant

Location: Konaka, Toyama Prefecture

Capacity: 200 kW



Fixed Tilt Mounting Solar Power Plant

Location: Jogani, Toyama Prefecture

Capacity: 600 kW

Fixed Tilt Mounting Solar Power Plant

Location: Kairyu, Toyama Prefecture

Capacity: 2,999 kW



Fixed Tilt Mounting Solar Power Plant

Location: Maseguchi, Toyama Prefecture

Capacity: 1,500 kW

Hydroelectric Power Plant

Location: Konomoto, Fukui Prefecture

Capacity: 660 kW



ABOUT AWINA



PT Awina Sinergi International is a Japanese-Indonesia Joint Venture established under the law of Indonesia, which is engaged in the business development and consultation of SDG's solutions to support Indonesia Net Zero Emission target, especially in the field of renewable energy, waste management, carbon neutral and business services.

Company Profile

Company Name	PT Awina Sinergi International (AWINA)
Date of Establishment	February 14, 2018
Address	SME Tower 8F, Jl. Jend. Gatot Subroto Kav. 94, Jakarta, Indonesia
Capital Stock	IDR 10.5 Billion



Renewable Energy Projects

1. Installation of Small hybrid off-grid micro wind turbine and solar PV system across Indonesia since 2010.
2. Project team for 1 MW rooftop solar PV of Smart Parking Gelora Bung Karno Jakarta for ASEAN Games 2018

ABOUT AAI

AAI Co., Ltd., focuses on research, consulting, and investment between Asia and Africa. They provide services in various projects, including renewable energy and business collaboration. AAI is also involved in social initiatives, such as internship programs for Indonesian students in Japanese companies.

Company Profile

Company Name	AAI Co., Ltd.
Date of Establishment	October 30, 2012
Address	Jam Building 2F, 356-1 Dorimachi, Kurume City, Fukuoka Prefecture
Capital Stock	59.25 Million Yen





**PT AWINA RIKUDENKO SOLAR ENGINEERING INDONESIA
YOU CAN COUNT ON US.**



SME Tower 16th Floor
Jl. Jend. Gatot Subroto Kav. 94, Pancoran,
South Jakarta 12780 INDONESIA

Contact: sales@ariseindonesia.co.id Homepage: <https://ariseindonesia.co.id/>

